

Capnography Masks

DESCRIPTION

m|devices Capnography Masks with 10cm extension CO2 sample line with filter also includes 3m oxygen tubing. The two elongated shaped masks are available in two sizes with this configuration; paediatric and adult. Capnography offers reliable feedback about the patient's condition and how they respond to treatment. Used widely to enable an improved assessment of patients in respiratory distress, shock and cardiac arrest.

FEATURES & BENEFITS

- All in one product for ease of use and reduces inventory
- 10cm extension CO2 sample line with filter attached, takes the weight and bulk away from the face mask for improved patient comfort
- Standard connectors
- Adjustable straps
- Kink resistant star lumen oxygen tubing clear
- 0.2 micron hydrophobic filter

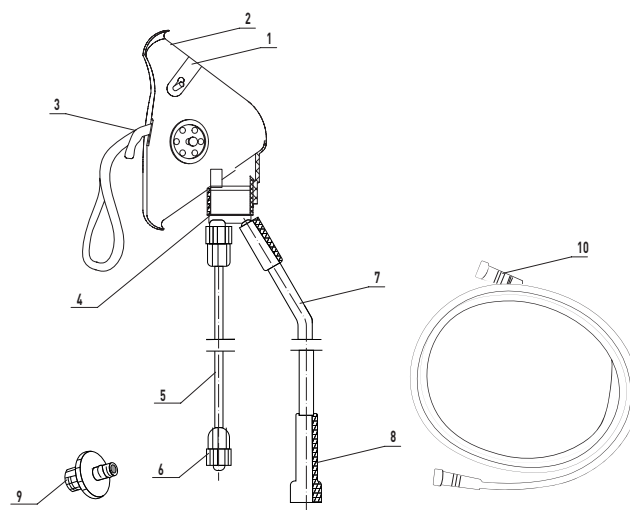
PRODUCT DATA

- Oxygen tubing length: 3m
- Oxygen tubing type: Star Lumen
- CO2 extension line outlet: 10cm
- Filter: 0.2 micron
- Material: PVC Mask and tubing ABS for filter
- DEHP YES = Product contains Phthalates such as the PVC Plasticizer Di-(2-ethylhexyl)-phthalate (DEHP).
- Not Made with Natural Rubber Latex
- ARTG Number: 308751
- Shelf Life: 5 Years

STANDARDS

- ISO 18562-1:2017 Biocompatibility evaluation of breathing gas pathways in healthcare applications Part 1: Evaluation and testing within a risk management process
- ISO 11135:2014 Sterilisation of health-care products
- BS EN ISO 5356-1:2015 Anaesthetic and respiratory equipment Conical connectors Part 1: Cones and sockets

PRODUCT DIAGRAM



| ITEM | DESCRIPTION |
|------|--------------------|
| 1 | Mask |
| 2 | Nose Clip |
| 3 | Elastic Strap |
| 4 | Connector |
| 5 | Sample line |
| 6 | Connector |
| 7 | 3m Oxygen Tube |
| 8 | Connector |
| 9 | Filter |
| 10 | 3m CO2 Sample Line |

Capnography Masks

| Capnography Masks | | | | |
|-------------------|---|------------|------------|--|
| RE-ORDER | DESCRIPTION | SIZE | CARTON/QTY | |
| AN065000NS | Capnography Mask - 10cm Extension CO2 Sample Line and Filter, 3m Oxygen Tubing | Paediatric | 50 | |
| AN065001NS | Capnography Mask - 10cm Extension CO2 Sample Line and Filter, 3m Oxygen Tubing | Adult | 50 | |
| AN067000NS | Capnography Mask - 10cm Extension CO2 Sample Line Outlet, 3m Oxygen Tubing | Adult | 50 | |
| AN067001NS | Capnography Mask - 10cm Extension CO2 Sample Line Outlet, 3m CO2 Sample Line and 3m Oxygen Tubing | Adult | 50 | |